

INSTRUMENT APPROACH - ICAO

HAWARDEN  
SRA RTR 2NM  
RWY 22  
(ACFT CAT A,B,C)

29  
090°

21  
270°

38  
360°

MSA 25NM NDB(L) HAW

29  
090°

21  
270°

31  
360°

MSA 10NM NDB(L) HAW

TWR 124.955  
RAD 120.055, 130.015°  
ATIS 125.430

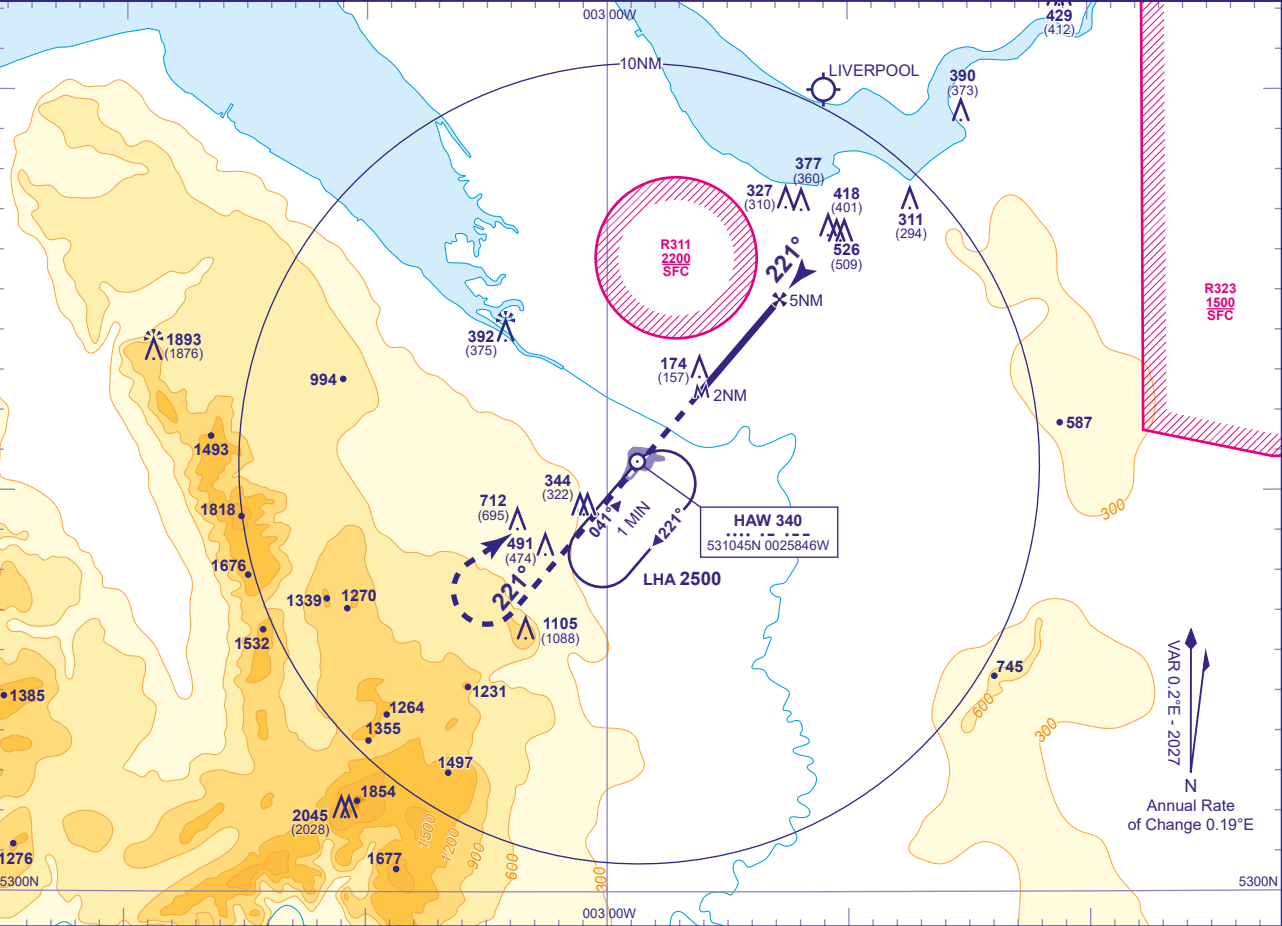
HAWARDEN TOWER  
HAWARDEN RADAR  
HAWARDEN INFORMATION

\*As directed by ATC, Not continuously monitored

AD ELEVATION 45  
THR ELEVATION 17  
OBSTACLE ELEVATION 2045 AMSL (2028) (ABOVE THR)

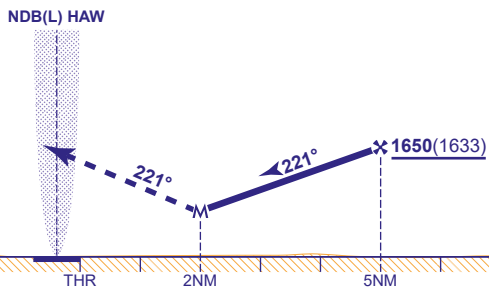
BEARINGS ARE MAGNETIC

TRANSITION ALTITUDE 5000



RADAR ADVISORY HEIGHTS Gradient 5.2%, 320FT/NM				
NM	5	4	3	2
ALT(HGT)	1650(1633)	1280(1263)	970(953)	650(633)

**MAPt RTR 2NM**  
Climb straight ahead to 2500, then turn right to **NDB(L) HAW** at 2500 or as directed.



Aircraft Category		A	B	C	Rate of descent	G/S KT				
OCA (OCH)	Procedure	650(633)	650(633)	650(633)		160	140	120	100	80
VM(C)OCA (OCH AAL)	Total Area	800(755)	900(855)		FT/MIN	840	740	630	530	420
	East of RWY 04/22	700(655)	800(755)	1500(1455)						

**NOTE** Aircraft must remain outside EGR311 at all times.

**CHANGE (11/25):** MSA INCREASES 25NM SE/SW QUADRANT, 10NM SE QUADRANT. MAG VAR. MAG TRACKS.